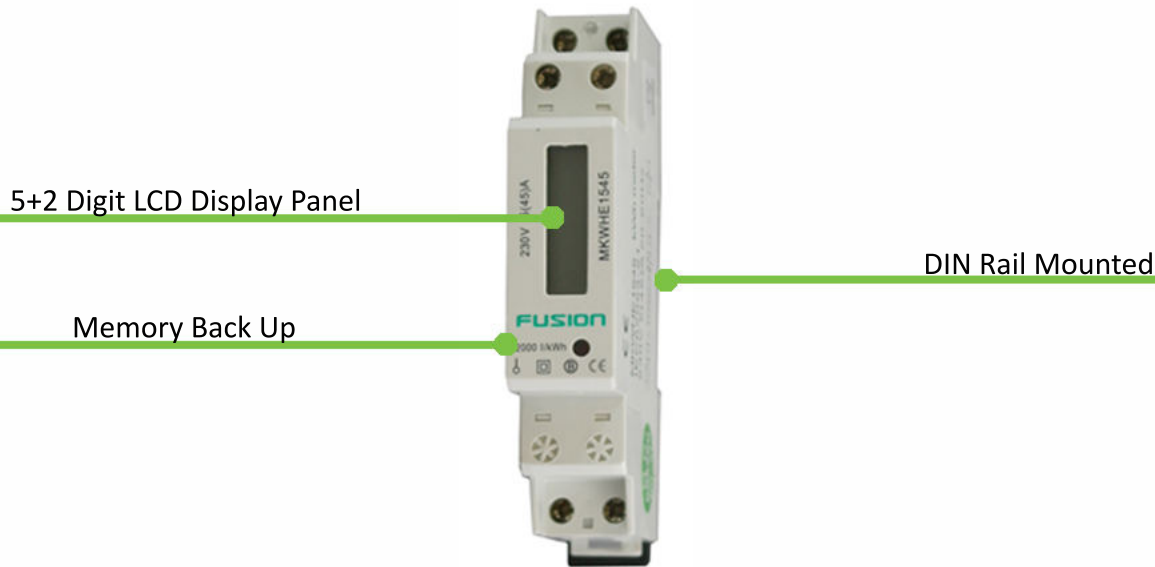


Description

Our single phase kWh meters are a DIN rail mount 1 pole module with 5+2 digit LCD display with memory back up. Manufactured to comply with IEC62053-21 for accurate and high performance operation. Rated at 240V AC with a current base of 5A, maximum current of 45A and a pulse output rate of 2000imp/kWh.

Features

- 5+2 Digit LCD Display Panel
- Memory Back Up
- DIN Rail Mounted
- Max Cable Size: 10mm sq cable



Technical Parameters

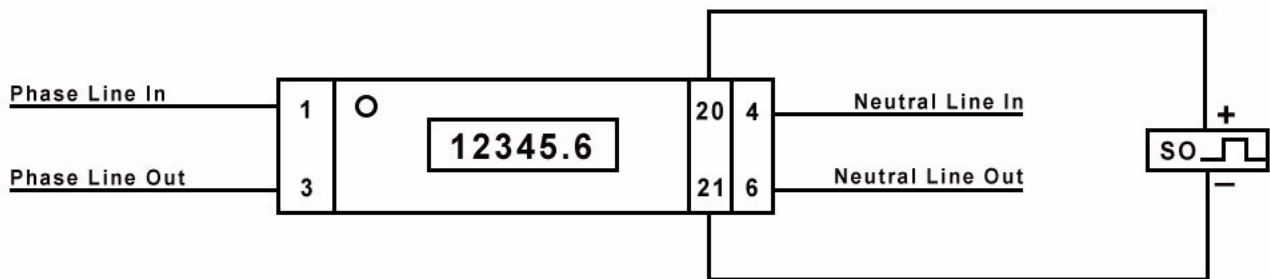
- Voltage: 230V ac.
- Voltage Range: -30% to + 30% of U_n
- Starting Current (mA): 0.4% of I_b
- Power Consumption of Current: $\leq 2W/10VA$
- Memory Back Up: EEPROM
- Enclosure Material Upper: Polycarbonate
- Enclosure Material Lower: Polycarbonate/Glass Fibre
- Operating Temp Range: $-10^{\circ}C$ to $+50^{\circ}C$
- Storing Temp Range: $-30^{\circ}C$ to $+70^{\circ}C$
- Insulating Encased Meter of Protective Class: II
- AC Voltage Withstand: 2KV for 1 minute
- Impulse Voltage Withstand: 6KV - 1.2US waveform
- Current Withstand: $30I_{max}$ for 0.01s
- Pulse Output Rate: 2000imp/kWh
- IP Rating: IP51
- Accuracy: 1.0
- Current Base (I_b): 5A
- Current Max (I_{max}): 45A
- Frequency: 50/60Hz
- Operating Humidity: 75%
- Storing Humidity: 95%

NOTE: LCD Display flashes 2000 times every kilowatt-hour

Programming Setting

Serial	Programming
1	Phase Line In
3	Phase Line Out
4	Neutral Line In
6	Neutral Line Out
20 & 21	Pulse Output Contact

Characteristics, Curves and Current Limiting Design



Related Products



Go to www.connectedswitchgear.com.au for
Connected Switchgears' full range of
Circuit Protection