



Run On Timer Mechanism

Product Information

MRT10

Specifications



Contact Status	Normally Open
Connection Type	4 Wire
Supply Voltage	230-240V ac +/- 10%
Frequency	50Hz
Max Current	10A
Max Power Rating	2400W
Min Load	1W
Operating Temperature	0 to 50°C
Cycle Timer Range	1 second to 30 mins
Compliance	AS/NZS 60669.2

Features and Applications

Connected Switchgear's MRT10 Run On Timer device is designed for applications where a 240V ac input load device is required to operate for a period of time after the circuit has been switched off. The most suitable application may be washrooms where a switch operating both a luminaire and exhaust fan together is required to turn the light off whilst allowing the fan to continue to operate for a specific time before switching off. The run on time setting ranges between 1 second and 30 minutes.

Understanding the Function of the MRT10 Device

The MRT10 device is designed to be installed behind a 240V AC air break switch to control the amount of time the connected load will continue to operate before shutting off after the operating switch is switched off. Whilst it requires 240V ac power, it may be used to control a load that requires a 240V ac input.

Notes for Installation:

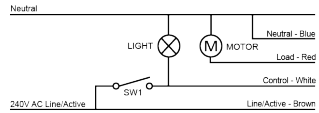
1) Please ensure that the total power requirement of the connected load does not exceed the rating of the product, especially in the case of capacitive and inductive loads.

2) Run On Time setting marks on the housing are approximate only, and where accuracy is required, please test against a more reliable indicator.

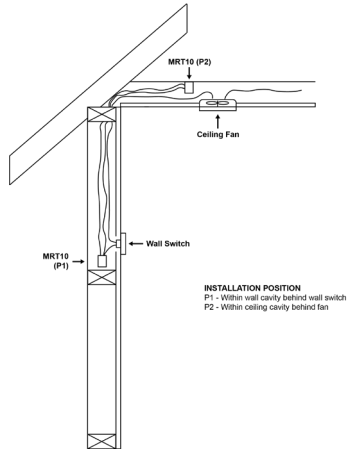
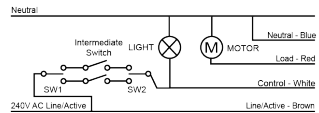
3) The run on timer device must be located in a concealed position such as a wall or ceiling cavity in close proximity to the load it is operating.

Wiring Diagram

Single Way Switching



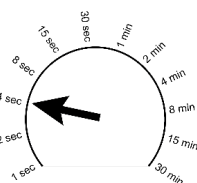
Multi-way Switching



Run On Time Settings

To set the specific time the device will continue to power on the load, adjust the POD dial, ensuring the arrowhead corresponds to the required time setting period.

Please note: time interval settings are approximate only.



This product is covered by a 5 Year In House Warranty. Please visit www.connectedswitchgear.com.au for terms and conditions.