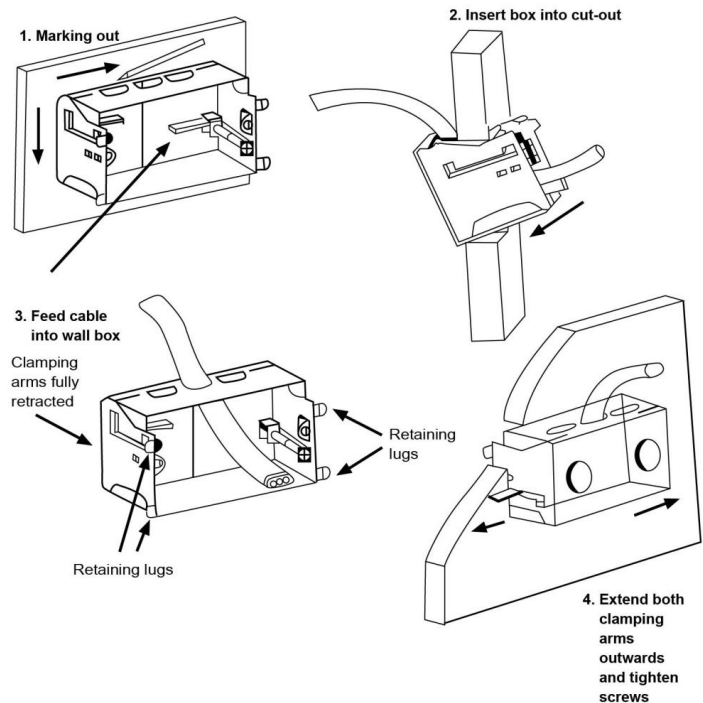


Fire Rated Wall Boxes
WBR-FR1

1. Use box as a template to mark cut-out. Refer to the table on the data sheet for actual dimensions.
2. Cut opening in wall with care to ensure neat fit of the box.
3. Remove knockout for cable entry. If bringing cables through rear of box, slit Intumescent material carefully with a sharp knife but do not remove any material.
4. Feed cables into wall box.
5. Ensure clamping arms are fully retracted into box.
6. Insert box into wall cut-out. Single gang only: fold down flap. Insert box and restore flap after insertion.
7. Extend clamping screws until box is firmly fixed in position. **DO NOT OVERTIGHTEN.**
8. Gently tap retaining lugs until flush with wall face.
9. To ensure acoustic rating, gasket supplied.



*Rating is dependent on strict adherence to installation instructions. Use Fyre-Seal Mastic to seal any gaps around box or to replace any Intumescent material inadvertently removed.