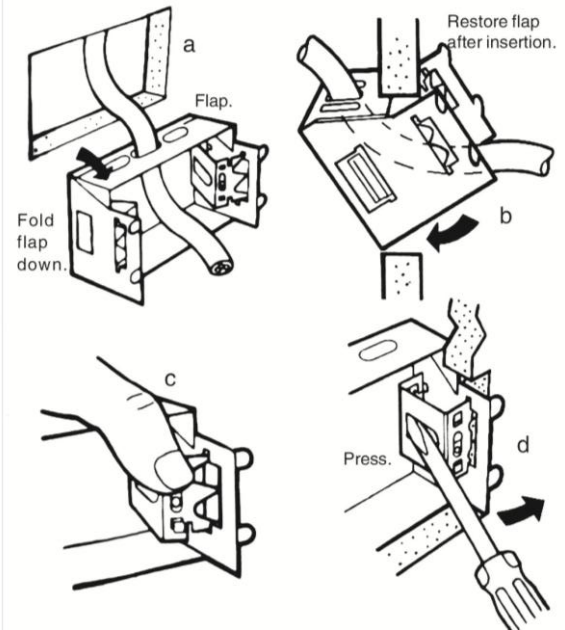


**Fire Rated Wall Boxes**  
**WBR-FR2**

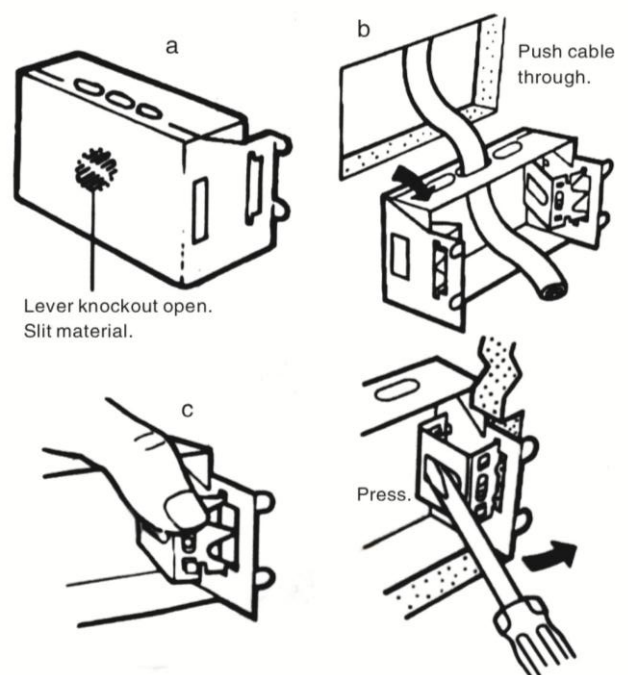
**1 HOUR FIRE RATED/ACOUSTIC INSTRUCTIONS**

1. Use back of box as the back of the package for wall cut-out. Cut opening with care to give tight fit to box.
2. Put cable(s) through cut-out and then pass through flap of box, puncturing the label only where necessary. Note: Label forms parts of the acoustic seal.
3. Fold flap of box inwards sufficiently to insert box and writing through the opening as shown. Restore flap after insertion.
4. Push box hard against the wall and to the bottom of the cut-out and pushing firmly with your thumb, force the spikes into the slots. Position a screwdriver as shown. Lever spikes to fully penetrate the plaster board until the brackets click fully into position.
5. The gasket supplied must be fitted for acoustic rating.



**2 HOUR FIRE RATED/ACOUSTIC INSTRUCTIONS**

1. Use back of box as the back of the package for wall cut-out. Cut opening with care to give tight fit to box.
2. Lever open near knockout. Cut slit into intumescent material and push cable through. Do not cut a hole or remove any material.
3. Push box hard against the wall and to the bottom of the cut-out and then pushing firmly with your thumb, force the spikes in to the slots. Position a screwdriver as shown. Lever spikes to fully penetrate the plaster board until the brackets click fully into position.
4. The gasket supplied must be fitted for acoustic rating.



## MULTI-GANG INSTALLATION INSTRUCTIONS

1. Mark the cut-out with the specified dimension (see over) or use the black of the box. Cut opening with care to give tight fit to boxes.
2. Starting with the left hand box pull cables through. When pulling cables through flap, puncture label only as necessary. (Label forms part of the acoustic seal). When pulling cables through punch-out, lever open the knockout and slit intumescent material. Pull cable through, do NOT cut a hole or remove any material. (Intumescent material is crucial to fire rating).
3. Push firebox hard against the left side of the wall and to the bottom of the cut-out. Then pushing firmly with your thumb, force the spikes into the slots. Position a screwdriver as shown above. Lever spikes to fully penetrate the plaster board until the brackets click fully into position.
4. Repeat steps 2 and 3 for the right side box holding the box hard against the right side of the cut-out. In a 2 gang installation it may be necessary to fold the flap of the box inwards to allow sufficient room to position the box correctly. Restore the flap after insertion.
5. When inserting the firebox in a 3 gang installation, it may be necessary to fold the flap of the box inwards to allow sufficient room to position the box correctly. Restore the flap after insertion.
6. The foam gasket supplied must be fitted for the acoustic rating.

